

NAVIGATION PURPOSE


INDONESIA
JAKARTA
TANJUNGPRIOK PORT
 SCALE 1 : 7 000 (06°05'45"S)

Depths are in metres and reduced to Chart Datum which is approximately the level of lowest normal low water.
 Heights are in metres above Mean Sea Level.
 Projection: Mercator.
 Spheroid: World Geodetic System - 1984.
 Navigational Marks: IALA - Region A.
 Source: Information regarding coverage, time and hydrographic survey work which is used in this chart are available on source data diagrams. Sounding imagery and fill check are also used to review this information.
 Reformatting by Hydrographic and Oceanographic Center of Indonesia Navy 2016.
 FOR SYMBOLS AND ABBREVIATIONS SEE CHART No. 1

SOURCES

a. Ponds Drying Survey	2017
b. Tanjung Priok Survey	2016
c. Tanjung Priok Survey	2016

TIDAL LEVEL REFERRED TO DATUM OF SOUNDING

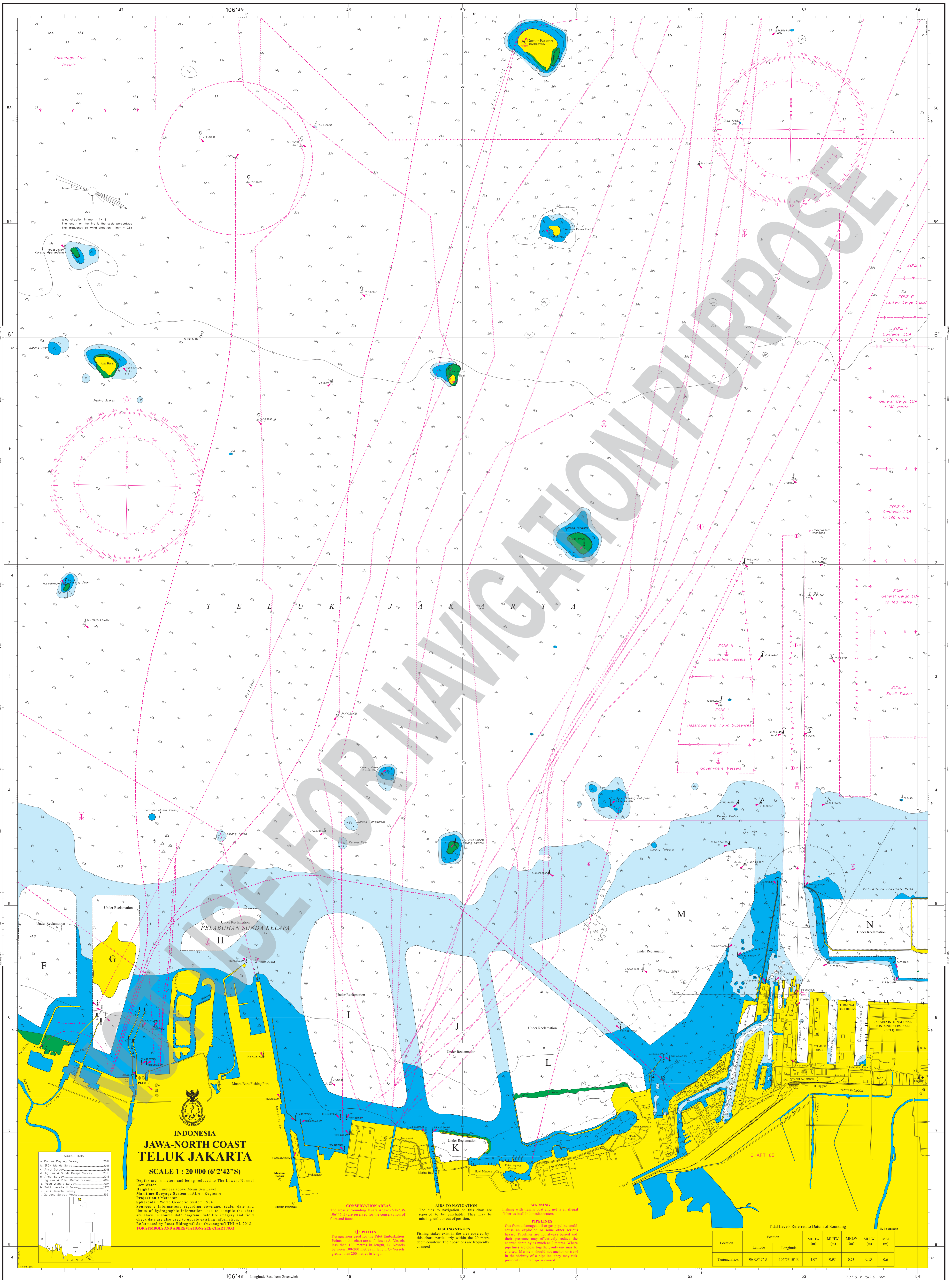
LOCATION	COORDINATE	MEAN	LOW	NEAP	LOW
	LATITUDE	001	001	201	001
Tanjung Priok	06°05'45" S	1.07	0.87	2.13	2.13

Notice to Mariners Corrections : 2017-2018 - 18477 - 18579 - 296-291
 Period 01
 User should refer corrections, additions and comments for improving this product to:
 CHIEF HYDROGRAPHER
 HYDROGRAPHIC AND OCEANOGRAPHIC CENTER
 INDONESIAN NAVY
 Jalan Pahlawan V/1 Asovi JAKARTA 14250
 Telp. : (021) 64714310 Fax. : (021) 64714819
 Email : info@pusidrolad.id
 Website : www.pusidrolad.id

First Edition December 2012

Published by :
 HYDROGRAPHIC AND OCEANOGRAPHIC CENTER
 INDONESIAN NAVY
 © Copyright by Pusidrolad All right reserved

Eighth Edition October 2016



NOTICES TO MARINERS CORRECTION No. 08 - 2018
 Printed in
 Users should refer corrections, additions, and
 comments for improving this product to:
 KEPALA PUSAT HIDROGRAFI DAN OSEANOGRAFI TNI AL
 Jalan Pantai Kuta V.I, Ancol JAKARTA 14240
 Telp. : (021) 64714810 Fax. : (021) 64714819
 Email : infohid@pushtidalid
 Website : www.pushtidalid

First edition November 1994

Published by :
 TENTERA NASIONAL INDONESIA ANGKATAN LAUT
 PUSAT HIDROGRAFI DAN OSEANOGRAFI
 © Copyright by Pushtidalid. All rights reserved

Second edition March 2018

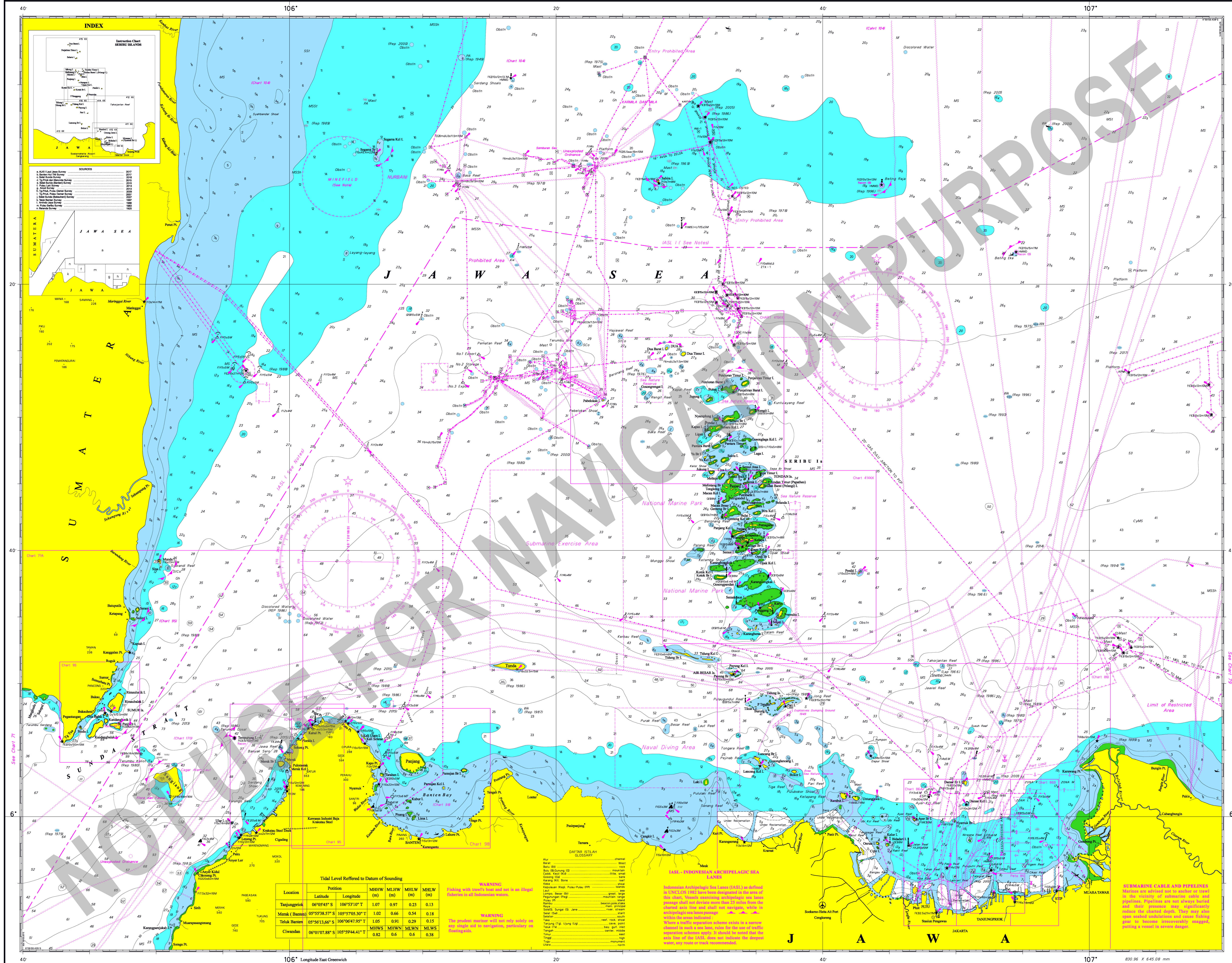
Tidal Levels Referred to Datum of Sounding

Location	Position		MLHW (m)	MLW (m)	MLLW (m)	MSL (m)
	Latitude	Longitude				
Tanjung Priuk	06°05'45\" S	106°53'10\" E	1.07	0.97	0.23	0.13

MERCATOR PROJECTION
Maritime Sounding System - JAWA Region - A
SPHEROID WORLD GEODETIC SYSTEM - 1984
FOR SYMBOLS AND ABBREVIATIONS SEE CHART NO.1

INDONESIA
JAWA - NORTH COAST
SHEET 1
SUNDA STRAIT TO TANJUNGPRIOK
SCALE 1 : 200 000 (5°33'00" S)

Depths are in meters and reduced to Chart Datum which is approximately the level of Lowest Normal Low Water
Heights are in meters above Mean Sea Level
Source - Information of coverage, time and hydrographic survey scale which utilized in this chart are available on source data diagram. The data from satellite imagery and field check also been used to renew this information.
Reformulated by Hydrographic and Oceanographic Center of Indonesian Navy 2019.



Tidal Level Referred to Datum of Sounding

Location	Position	MHW (m)	MLW (m)	MHW (m)	MLW (m)
Tanjungpriok	06°05'45" S 106°53'10" E	1.07	0.97	0.23	0.13
Merak (Barren)	05°53'38.57" S 106°52'05.30" E	1.02	0.66	0.54	0.18
Teluk Banten	05°56'13.60" S 106°06'47.90" E	1.05	0.91	0.29	0.15
Ciwandari	06°01'07.80" S 106°59'44.41" E	0.82	0.5	0.6	0.38

Notice to Mariners Corrections, No.15 - 2019
Printed in
Users should refer corrections, additions and
comments for improving this product to:
CHIEF HYDROGRAPHER
HYDROGRAPHIC AND OCEANOGRAPHIC CENTER
INDONESIAN NAVY
Jalan Pantai Kuta V/1 Ancol JAKARTA 14430
Telp: (021) 64714810 Fax: (021) 64714819
Email: infohid@pusbidrowal.id
Website: www.pusbidrowal.id

First edition February 1955

Published by:
HYDROGRAPHIC AND OCEANOGRAPHIC CENTER
INDONESIAN NAVY
© Copyright by Pusbidrowal All rights reserved

Twenty third edition December 2017